

Attendees:

Sue Mowforth, Jan Torkington (JT), Jane Snow, Penny Griggs (PG), Helen Doyle, Phil Ray (PR), Mark Grainger (MG), Graham Richardson (GR), John Chilcott, Pete Torkington (PT), Vi Granger, Hylda Wilson.

Apologies: Jenny and Gordon Verity, Kirsty Lobb (KL), Sarah and Glen Miller, Elizabeth Kelly, Larch Gauld, Stephen Makepeace, Wendy Alleway, Jo Rogers.

GR noted that sufficient members were attending to make the AGM quorate.

1. Ratification of 2012 AGM Minutes.

The minutes had previously been distributed.

Motion to accept the Minutes – Proposed by MG, seconded by JT, unanimously accepted.

2. Chairman's Report of 2012-13 season – Acting Chairman Graham Richardson:

This has been a year of consolidation, with membership numbers increasing, and audience figures only slightly down on the previous season. The Financial performance has remained steady.

Excellent efforts by the Membership Secretary, MG, in his enthusiastic activities throughout the year as well as membership initiatives which have produced new members despite a significant number of 'leavers', and by PT in producing and maintaining a very professional and 'easy-to-book on-line' website have both contributed to the Club's continuing success. Both Committee members were thanked for their sterling efforts.

Good relations with the ODEON have been established, and the committee has obtained written confirmation of the previous (sustainable) rates for monthly screenings for the 2013/4 season.

The Committee has researched how much money the Club should be holding in reserve. Due to the lack of control over costs (screening rates), and the unpredictability of our membership numbers it has been decided to maintain a reserve equal to one year's expenditure. The current reserve is almost at this figure.

The ODEON is not flexible in being able to show Classic and other niche films which are not part of their normal distribution listings. AFC's purpose is to bring a range of films to Andover, so non-mainstream films will have to be shown as 'Special' screenings at alternative locations. The committee has been searching for other suitable locations; the next 'special' film event will be at the Wolversdene Club on Oct ???

3. Treasurer's Report and publication of unaudited end of year figures – Graham Richardson

Retiring Treasurer Kirsty Lobb, was applauded for her work over the last year. She leaves with the Committee's thanks and best wishes for the future.

Report: see Appendix A

4. Secretary's Report - Mark Granger.

Membership:

"Last year at the AGM, I reported a growth in membership with 61 full members and 8 associate members giving a total of 69. This year, although our associate membership has dropped to 5 our full membership has grown to 76 our highest yet at an AGM.

Although we repeated our membership offer of discounted membership at £15.00 for a couple of events this year, it did not prove as successful as in previous years and only attracted a couple of new members. Far more successful was our initiative at pointing out to non-members who had bought 2 or more tickets that by joining the Club and using a

voucher immediately, they effectively reduced their membership fee by £8.00. As members they got a £1.50 refund on their own entry ticket & by using a voucher they got back the £6.50 they had paid for the other ticket. This idea was particularly popular following our January film, when 12 new members joined the Club – our biggest increase at a single event. We now intend to make the communication of this type of membership a routine at all of our events where the relevant non-member purchases are being made. We have set it up to minimise the effort to the committee members involved and made it possible for non-members to take up the offer by on-line purchase after they have bought their tickets.

Although we have lost 16 full members and 6 associate members since our last AGM, we have recruited a total of 31 new members and 3 associate members. Our membership actually peaked in June this year with 78 full members, but has now dropped back to 76, with a couple more former members letting their membership lapse. Although we encourage members to communicate their reason for leaving when they let their membership lapse, very few do so. We did have 2 members communicate this season, both giving the reason that they found they were not attending enough events to make it worth while remaining as members, but stating that they would continue to attend the odd event as non-members.” MG

Special Events:

“We have been aware that when we have run “Special Events” such as The Boy Meir and Andover FilmFest in the past, although our audience has not been huge, they have been very much appreciated by those members who did attend. Since we showed Brief Encounter a couple of some time ago, our problem has been finding a suitable venue where we can run such events, in a cost effective way.

Our arrangements with the Odeon, although very satisfactory for most planned events, sometimes run into problems when we wish to show a film not readily available from the normal distributors with whom Odeon have routine contracts. Phil may expand on this point in his discussion on film selection. However this problem particularly applies to older “classic” films and we are aware that since we showed Hunted back in the 2011-2012 season we have not shown any “classic” films as part of our programme.

Within the last couple of months we think we have resolved both the issue of a venue for Special Events and a mechanism, whereby we can show “classic” films. We have already booked the Hayward Suite in the Wolversdene club for the evening of Monday 28th October. The committee are in the process of sorting out the film selection for that event and it is likely that you will hear more over the coming weeks. Initially it will be a members & guests only event by pre-booking, but as the capacity of the venue is quite generous, we may extend the invitation, again for pre-booked seats only to our non-member mailing list.

If that event is successful & popular we may well schedule regular screenings at the Hayward Suite, in addition to our monthly showings at the Odeon.” MG

1. Summary of last season’s Film Selection – Phil Ray

PR explained that as it was no longer possible to show classic films at the ODEON because of potential rights issues, the Monday night screenings will therefore have to concentrate on recent films. It was suggested that this may be having a negative impact on membership but will hopefully be addressed with the events at the alternative venue.

This season has been the first full one with ODEON owning the cinema and with help from the staff and especially Graham O'Connor in the booking office it has brought a regularity to the process of booking and is much appreciated. This regularity has allowed the club to implement an effective way of collating committee and membership votes. See Appendix B attached to the AGM Minutes which details the film choices made and how the committee voted. It was suggested this be published for members to survey the process and therefore encourage anyone who wished to further influence the choice of films shown by AFC to join the committee.

PR had the idea of finding out the favourite film of the season as voted for by members which coincided with an enquiry from The British Federation of Film Societies (BFFS). The BFFS had requested some feedback from member Film Clubs – the quickest and easiest feedback being ‘Best Film of the past Season’. To this end, AFC members had been emailed to vote for their best film shown this season. The result was ‘Untouchable’ with ‘The Angel’s Share’ and ‘Cloud Atlas’ in 2nd and 3rd places respectively. GR to email this result back to BFFS.

5. Election of Officers – GR

Name	Position 2012/13	Position 2013/14
Graham Richardson	Acting Chairman	Committee Member
Phil Ray	Committee Member	Chairman
Kirsty Lobb	Treasurer	(Film Club Member)
Penny Griggs	(Film Club Member)	Treasurer
Mark Granger	Secretary/Membership Sec	Secretary/Membership Sec
Pete Torkington	Communications/website	Communications/website
Helen Doyle	Committee Member	Committee Member
Sue Mowforth	Committee Member	Committee Member

This table represents positions that members are willing to stand for.

GR suggested that the members vote on these proposed positions.

Proposed by HD, seconded by PT, and this proposal was unanimously approved by the meeting.

6. Proposals:

A. To amend the quorum required for an AGM from the current 15% to 10%. This proposal is presented due to the rising membership numbers.
The motion was passed unanimously.

B. To move the regular monthly screenings from 1st to 2nd Monday of each month with effect from the start of the 2013 / 2014 season. This is to avoid Bank Holidays, New Year celebrations, school holidays and Easter which can disrupt the screening schedule.

Voting: for the motion = 8, those against the motion = 0, abstentions = 4.

The motion was passed.

7. Any Other Business:

MG announced that AFC will be presenting a display in the Library Window between Monday 12th August and Saturday 24th August. The theme of this year’s display is Andover Cinemas – Past and Present. It will include photos of past cinemas (with thanks

Annual General Meeting
12pm, 20th July 2013
Wolversdene Club, Andover



to John Chilcott for providing many of the photographs), as well as the present ODEON. Members of the public are invited to contribute by submitting memories and extra information either via email or by writing on forms held on the main library desk. Hard and soft copy of the resulting photos and information will be donated to the library.

Meeting ended at 1315

Appendix A to the AFC AGM Minutes 2013

Andover Film Club

Financial statements for the year ended 31st July 2013

Contents

1. Committee members' annual report for the year ended 31/07/2013.....	6
2. Income and expenditure for the year ended 31/07/2013	6
3. Profit and loss statement for the year ended 31/07/2013	7
4. Statement of assets and liabilities at 31/07/2013.....	8
5. Notes to the accounts for the year ended 31/07/2013	9
Appendix 1: Film attendance 2012/13 season.....	10
Figure 1: Film attendance total and type 2012/13 season	10
Figure 2: Film attendance total and type 2012/13 season	10
Table 1: Film attendance total and type 2012/13 season	11
Appendix 2: Film attendance to date	12
Figure 3: Average film attendance total and type since Club's inauguration	12
Figure 4: Film attendance total and type since Club's inauguration	13
Table 2: Film attendance total since the Club's inauguration	14

Andover Film Club

1. Committee members' annual report for the year ended 31/07/2013

Main address

9 Belle Vue Road, Andover,
Hampshire, SP10 2DF

Committee members

Helen Doyle
Mark Grainger
Kirsty Lobb (Treasurer)
Sue Mowforth
Phil Ray
Graham Richardson (Acting Chair)
Pete Torkington (Former Chair)

Bankers

HSBC, 30 High St, Andover
Hampshire. SP10 1NN

Governance and management

The Club is governed in accordance with its constitution (last revised 28/09/2011).

Andover Film Club's affairs are managed by a Committee of at least four (4) members and no more than eight (8), consisting of a Chair, a Treasurer and such other officers. Committee members are elected at the AGM and hold office until their successors are elected at the next AGM.

Aims and objectives

The fundamental purpose of the club is to bring films to Andover that would not normally be seen here on the big screen.

Summary of the main achievements during the period

Eleven films were shown during the period at Odeon Andover, attracting a total attendance of 678 (38 more than the previous season, in which there was one film less). 9 of the season's films feature in the top 20 most attended films screened by AFC since its inauguration in 2009.

The Club has continued to generate a year-on-year profit, recording a net surplus of £877.10 for the 2012/13 period to date, but with the annual website fee outstanding. Membership numbers continue to grow, totalling 76 this period, compared with 69 at July 2012; a promoted 'membership offer' at regular screenings to non-members who have pre-paid tickets has been a key factor in this growth.

The Club's relationship with Odeon Andover has been positive, and the existing arrangement with the cinema appears sustainable for the Club's next period.

Signed on behalf of the committee:

Signed _____ Date _____
Graham Richardson, Acting Chair

2. Income and expenditure for the year ended 31/07/2013

(Figures shown in brackets are for 13 months ending 31/07/2012)

Income

Andover Film Club

	£	
<i>Membership</i>	1290	
<i>Regular screening</i>	3442	
<i>Special events</i>	0	
<i>Raffle</i>	94	
<i>Other</i>	48	
Total receipts	4874	(5060)

Expenditure

	£	
<i>Venue hire</i>	2760	
<i>Film rental</i>	0	
<i>Film advertising</i>	0	
<i>Ticket refunds</i>	192	
Total screening	2952	
<i>Print/post/stationery</i>	377	
<i>Club advertising</i>	190	
Total membership/general admin	567	
<i>Safety wear/uniform</i>	0	
<i>Subsistence</i>	5	
Total labour	5	
<i>Insurance/legal</i>	178	
<i>Banking</i>	124	
<i>Professional fees</i>	85	
Total professional	387	
<i>Raffle</i>	12	
<i>Other allowable expenses</i>	74	
Total other	86	
Total expenditure	3997	(4384)

3. Profit and loss statement for the year ended 31/07/2013

	£	
Net profit/(loss)	877	(676)
	Profit	Profit
Bank and cash at the start of the period	£2792	
Bank and cash at the end of the period	£3669	

Andover Film Club

4. Statement of assets and liabilities at 31/07/2013

Cash assets

	£
<i>Cash float</i>	89
<i>Other cash in hand</i>	0
<i>Current account</i>	3767
<i>Cash/cheques in transit (to bank)</i>	115
<i>Paypal</i>	0
<i>Paypal in transit (to bank)</i>	0
<i>Cheques in hand</i>	0
Total cash assets	<u>3971</u>

Liabilities

	£
<i>Cheques (paid out but not cashed)</i>	250
<i>Other expenses owed</i>	52
Total cash assets	<u>302</u>

These financial statements are accepted on behalf of the organisation by:

Signed _____
Kirsty Lobb, Treasurer

Dated _____

5. Notes to the accounts for the year ended 31/07/2013

1. Receipts & payments accounts

Receipts and payments accounts are statements that summarise the movement of cash into and out of the Club during the financial year. In this context “cash” includes cash equivalents, for example, bank accounts where cash can be readily withdrawn to pay for debts as they become due.

2. Grants & Donations

No grants or donations were received by the Club during the financial year; no applications for grants were submitted.

3. Committee members' remuneration

During this period, a total of £63 was reimbursed to five committee members for only those expenses occurred in purchasing items and/or meeting Club payments, such as printing, raffle prizes, BFFS membership, and insurance. Any other personal expenses incurred by Committee members, such as travel costs, have been met by the individual officers and not drawn from the Club's accounts.

4. Ticket refunds

Ticket refunds amounting to £192 were incurred, mostly as a result of a membership offer in which a non-member who had pre-booked two tickets for a screening could receive a £12 membership (normally £20) by receiving a refund on their pre-paid tickets (£13) in exchange for 1 member (£5) and 1 complementary ticket (from the member's 'Bring a friend for free' voucher).

The committee agreed at its meeting in June 2013 to cease ticket refunds for this membership offer to reduce the number of financial transactions at each screening; instead the Club will offer a membership at £12 to eligible individuals.

5. Discrepancies

From March 2013, expenses to committee members were made by cheque instead of cash to reduce potential discrepancies.

An overall income discrepancy of £44.50 is noted on the profit and loss statement at year ending, compared with the sales book summary (which is considered accurate). To reconcile the accounts, £44.50 of 'other' income has been recorded to the sales ledger; an audit is due in September 2013 which will scrutinise the accounts and identify/rectify any anomalies in the financial records.

Appendix 1: Film attendance 2012/13 season

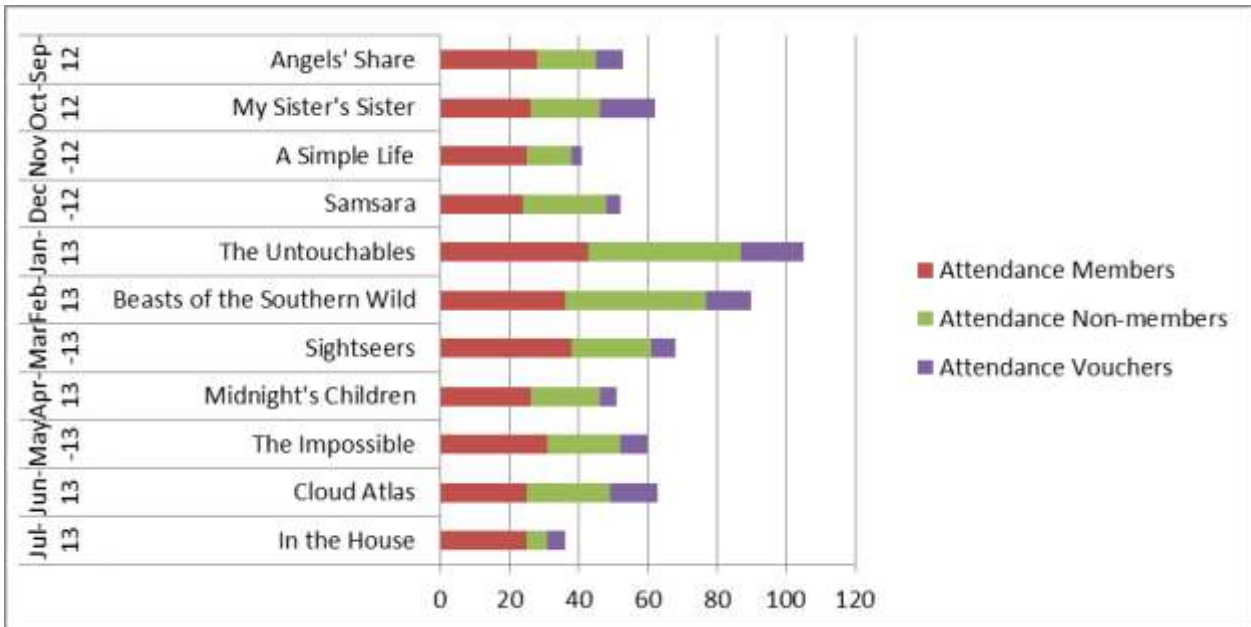


Figure 1: Film attendance total and type 2012/13 season

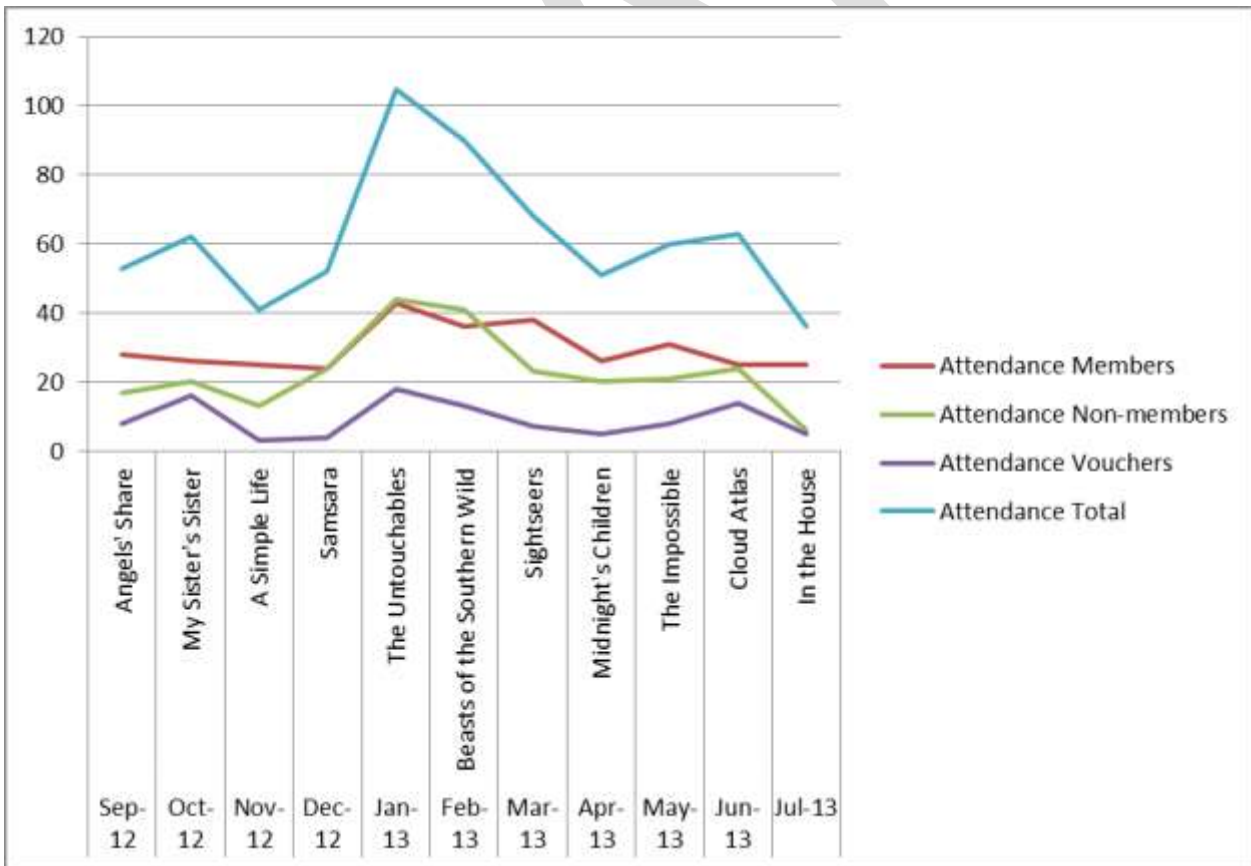


Figure 2: Film attendance total and type 2012/13 season

Andover Film Club

Table 1: Film attendance total and type 2012/13 season

Screening	Film	Release date	Attendance			
			Members	Non-members	Vouchers	Total
Sep-12	Angels' Share	2012	28	17	8	53
Oct-12	My Sister's Sister	2012	26	20	16	62
Nov-12	A Simple Life	2011	25	13	3	41
Dec-12	Samsara	2011	24	24	4	52
Jan-13	The Untouchables	2011	43	44	18	105
Feb-13	Beasts of the Southern Wild	2012	36	41	13	90
Mar-13	Sightseers	2012	38	23	7	68
Apr-13	Midnight's Children	2012	26	20	5	51
May-13	The Impossible	2012	31	21	8	60
Jun-13	Cloud Atlas	2012	25	24	14	63
Jul-13	In the House	2012	25	6	5	36

DRAFT

Andover Film Club

Appendix 2: Film attendance to date

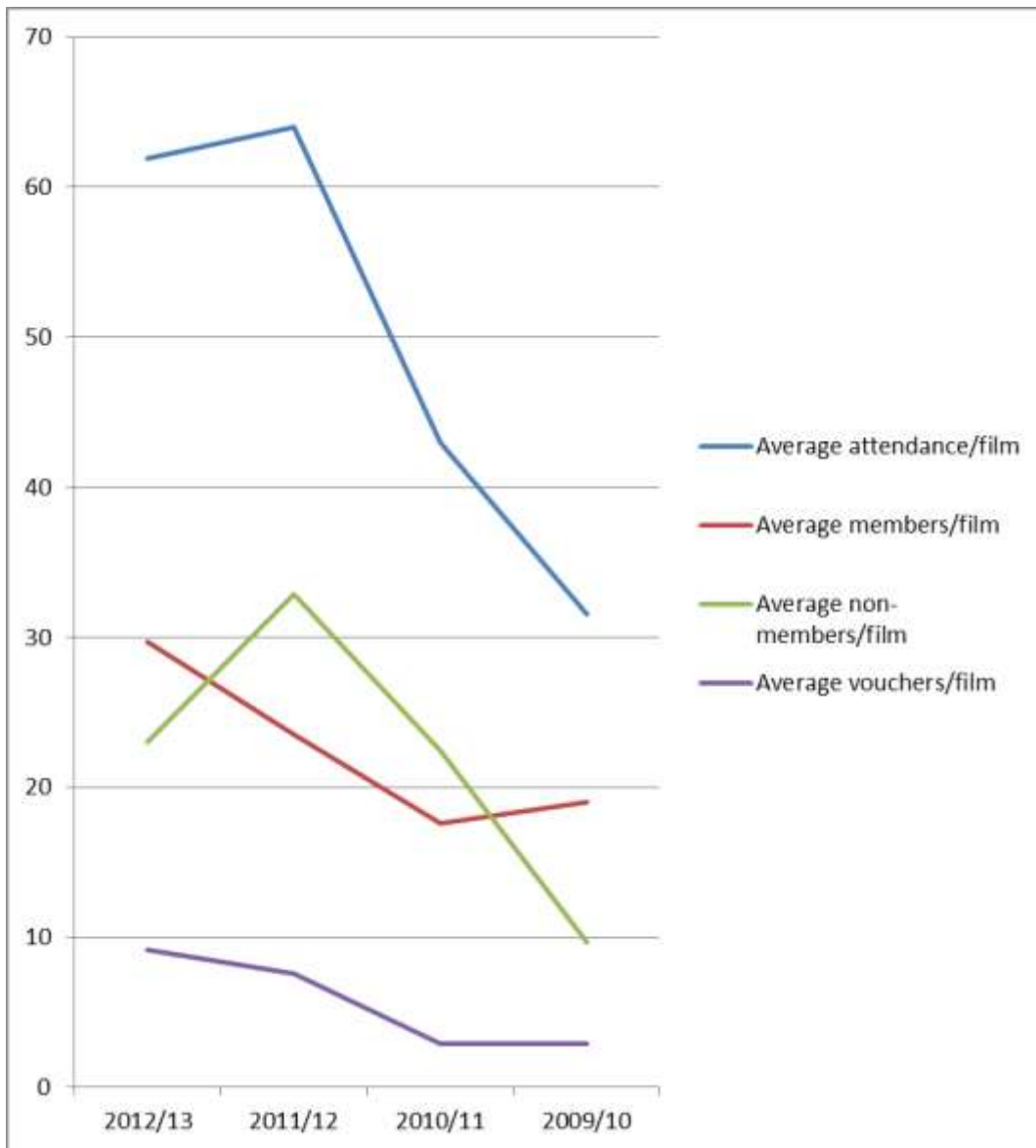


Figure 3: Average film attendance total and type since Club's inauguration

Andover Film Club

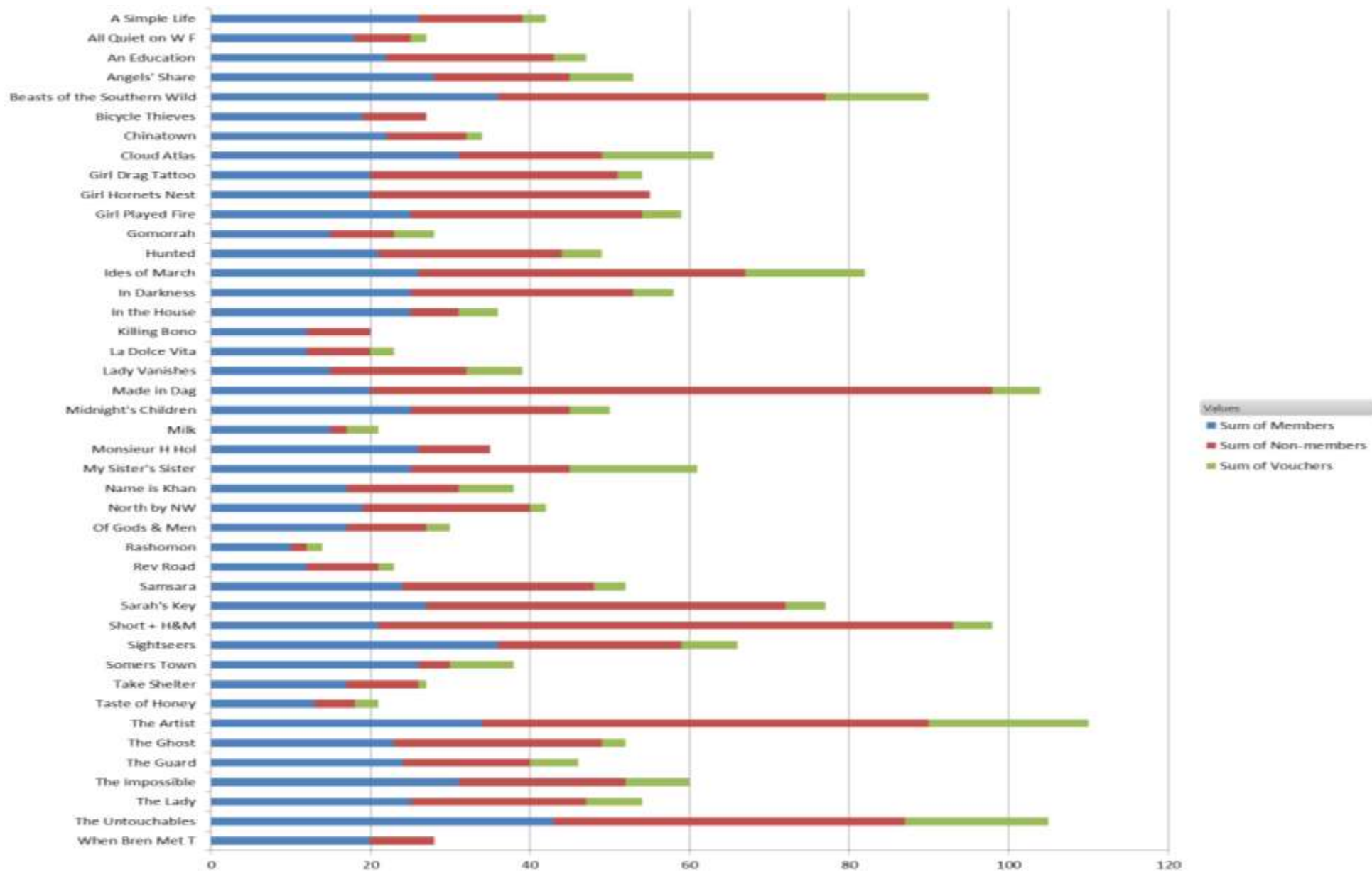


Figure 4: Film attendance total and type since Club's inauguration

Andover Film Club

Table 2: Film attendance total since the Club's inauguration

Rank	Month	Film	Release date	Total	
1	May-12	The Artist	2011	110	
2	Jan-13	The Untouchables	2011	105	2012/13 season
3	Jan-11	Made in Dag	2010	104	
4	Sep-11	Short + H&M	n/a	98	
5	Feb-13	Beasts of the Southern Wild	2012	90	2012/13 season
6	Jan-12	Ides of March	2011	82	
7	Nov-11	Sarah's Key	2011	77	
8	Mar-13	Sightseers	2012	68	2012/13 season
9	Jun-13	Cloud Atlas	2012	63	2012/13 season
10	Oct-12	My Sister's Sister	2012	62	2012/13 season
11	May-13	The Impossible	2012	60	2012/13 season
12	Feb-11	Girl Played Fire	2010	59	
13	Jul-12	In Darkness	2011	58	
14	Jul-11	Girl Hornets Nest	2010	55	
15	Nov-10	Girl Drag Tattoo	2010	54	
16	Apr-12	The Lady	2011	54	
17	Sep-12	Angels' Share	2012	53	2012/13 season
18	Jul-10	The Ghost	2010	52	
19	Dec-12	Samsara	2011	52	2012/13 season
20	Apr-13	Midnight's Children	2012	51	2012/13 season
21	Jun-12	Hunted	1952	49	
22	May-10	An Education	2009	47	
23	Oct-11	The Guard	2011	46	
24	Apr-11	North by NW	1959	42	
25	Nov-12	A Simple Life	2011	41	
26	Feb-12	Lady Vanishes	1938	39	
27	Feb-10	Somers Town	2008	38	
28	Sep-10	Name is Khan	2010	38	
29	Jul-13	In the House	2012	36	
30	Oct-09	Monsieur H Hol	1953	35	
31	Oct-10	Chinatown	1974	34	
32	Mar-11	Of Gods & Men	2010	30	
33	Mar-10	Gomorrah	2008	28	
34	Jun-10	When Bren Met T	2000	28	
35	Sep-09	Bicycle Thieves	1948	27	
36	Nov-09	All Quiet on W F	1930	27	
37	Mar-12	Take Shelter	2011	27	
38	Jan-10	La Dolce Vita	1960	23	
39	Dec-10	Rev Road	2009	23	
40	Dec-09	Milk	2008	21	
41	Apr-10	Taste of Honey	1961	21	
42	Jun-11	Killing Bono	2011	20	
43	May-11	Rashomon	1950	14	

Appendix B to AFC AGM Minutes 2013

Process for selecting monthly screenings.

Committee can choose a film without a membership vote up to 4 times per season. Otherwise, after committee discussion PR presents 6 titles to the committee, who vote to reduce these to 3. These are then presented to the membership for final voting.

Season 5

* denotes winning/screened film

September 2012. Cosmopolis, The Last Projectionist, Polisse unavailable – Straight to membership vote go The Angels' Share,* Moonrise Kingdom and She Monkeys.

October – Committee Choice vote**	PT	MG	GR	SM	HD	KL	PR	
Your Sister's Sister*	2	2	2	1	1			8
Searching for Sugarman	1	1	3	2	2			9
Friends with Kids		3	3	1	3	3		13

**A Royal Affair postponed after concern over length as feature to preceding short film and Q+A. Committee vote initiated.

November

A Simple Life*	4	2		1	2			9
A Royal Affair	2	4		2	1			10
360	5	3		3	5			16
Ping Pong (unavailable)	1	3		6	3			13
The Last Projectionist (unavailable)	3	6		4	4			17
Killer Joe	6	5		5	6			22

Dec - Shadow Dancer withdrawn due to concern about an ODEON Senior Screen screening clash. Policy revoked at next meeting.

Samsara*	2	2	5	1		1		11
White Christmas	5	3	3	3		2		16
Berberian Sound Studio	1	5	2	4		5		17
Tabu (unavailable)		4	1	4	2		4	15
The Imposter (unavailable)		3	4	1	5		3	16

January 2013 – Committee Choice – Untouchable – voted as 'Film of the Year' by members at season's end

February

Beasts of the Southern Wild*	1	1	3	3	3	4		15
The Sapphires	4	2	2	1	1	6		16
Ruby Sparks	3	4	1	5	5	2		20
Argo (unavailable)	6	5	4	6	2	1		24
Ginger and Rosa	5	3	6	2	4	5		25
Liberal Arts	2	6	5	4	6	3		26

March

Argo	1	6	2	2	2	2		15
The Master	3	5	4	4	1	1		18
Sightseers*	2	4	6	1	4	3		20
Amour	6	1	3	3	3	5		21
The Hunt	5	3	1	5	5	4		23
My Brother the Devil	4	2	5	6	6	6		29

April

Midnight's Children*	3	1	5		4	2		15
Smashed	2	4	3		2	4		15
Seven Psychopaths	6	5	1		5	1		18
You Will Be My Son (unavailable)	4	2	4		1	5		16
Safety Not Guaranteed	5	6	2		3	3		19
The Impossible	1	3	6		6	6		22

Andover Film Club

May

Hitchcock	4	2	1	2	1	3	13
The Sessions	1	4	2	3	4	1	15
<u>The Impossible*</u>	<u>2</u>	<u>1</u>	<u>6</u>	<u>1</u>	<u>6</u>	<u>2</u>	18
The King of Pigs	3	5	4	5	2	5	24
Hors Satan	6	3	3	4	5	4	25
Punk Syndrome	5	6	5	6	3	6	31

June

Stoker	2	5	2	4	2	1	16
Cloud Atlas*	6	3	1	3	1	3	17
<u>Caesar Must Die</u>	<u>4</u>	<u>1</u>	<u>3</u>	<u>2</u>	<u>6</u>	<u>5</u>	21
No (unavailable)	5	2	5	1	5	4	22
To The Wonder	1	4	6	6	4	2	23
For Ellen	3	6	4	5	3	6	27

July– Committee Choice vote after original choice Lawrence of Arabia unavailable. A tie entitles PR to vote.

A Late Quartet (unavailable)	1	3	3	1	2	2	1	(12)	13
In the House*	2	1	2	3	1	3	2	(12)	14
Robot & Frank	3	2	1	2	3	1	3	(12)	15